

## 119. SANITARY HOUSING INLINE SINGLE CARTRIDGE CODE 8

### Function:

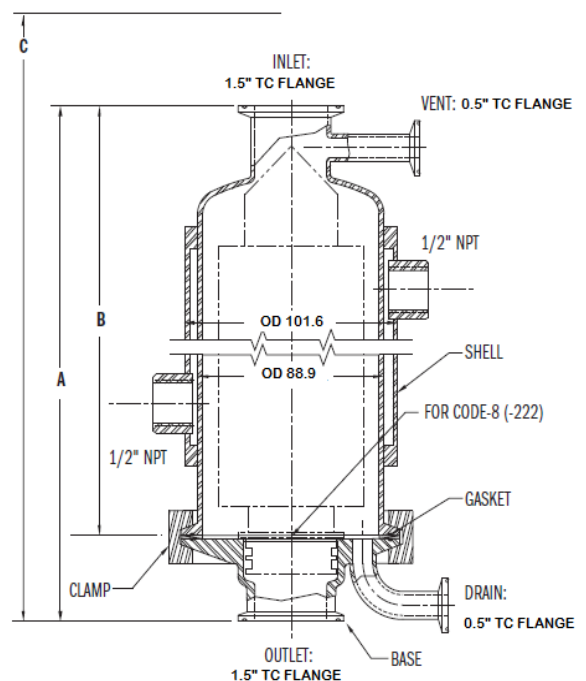
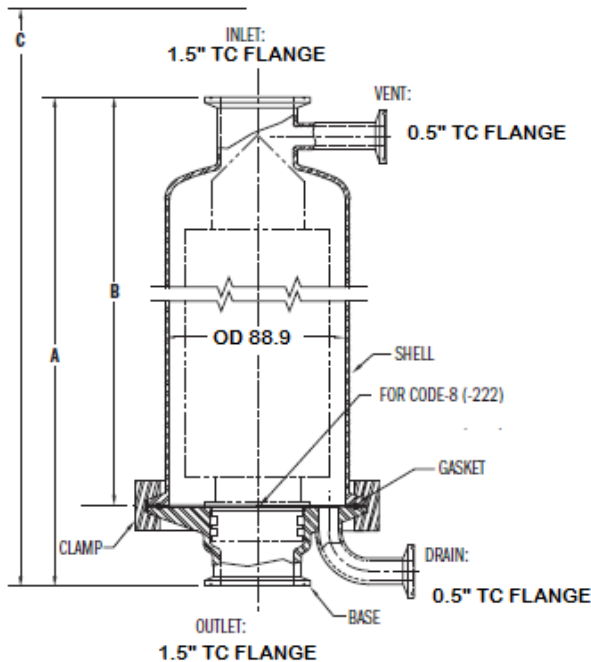
Sanitary housings are used in sterile filtration applications of the biotech and pharmaceutical applications.

### Features:

- Material:
  - Contact parts: AISI 316L
  - Non contact parts: AISI 304
- Elastomer: Silicone
- Internal surface finish: Electropolished  
Ra<0.5 micron
- No threaded connections
- Cartridge connection: Code 8 (222)
- Service ratings:
  - Liquid: 17 bar@21 °C
  - Air/Gas: 9 bar @21°C

### Application:

- Final product filtration
- Steam filtration
- Solvent filtration
- Beverage equipment.
- Air filtration
- Gas filtration



GEOMETRY ENGINEERING INNOVATION,

No 4, Basaveshwara Industrial Area, Rajagopalnagar Main road, Bangalore-560056

[www.geiprocess.com](http://www.geiprocess.com). E-mail:info@geiprocess.com DOC DT000119

# GEI Process

| ELEMENT SIZE | A in mm | B in mm | C in mm |
|--------------|---------|---------|---------|
| 5" ELEMENT   | 236     | 198     | 396     |
| 10" ELEMENT  | 363     | 325     | 693     |
| 20" ELEMENT  | 617     | 579     | 1506    |
| 30" ELEMENT  | 871     | 833     | 1709    |
| 40" ELEMENT  | 1125    | 1087    | 2217    |

C is the minimum distance required to remove the housing shell.

## ORDERING INFORMATION:

Ex: Part # 119-1-1-1-1-1: Sanitary housing suitable for single cartridge code 8 with no jacket and suitable for 5.0" element with 1/2" TC flange for vent and drain. Inlet and outlet 1.5" TC sanitary flange. O-ring silicon.

|     |   |   |   |   |   |
|-----|---|---|---|---|---|
| 119 | 1 | 1 | 1 | 1 | 1 |
|-----|---|---|---|---|---|

| Product code | Jacket option                         | Element length | Vent and drain                   | Inlet/Outlet                         | O-ring/Gasket               |
|--------------|---------------------------------------|----------------|----------------------------------|--------------------------------------|-----------------------------|
|              | 1-No jacket                           | 1- 5.0"        | 1-1/2" TC                        | 1: 1.5" TC Sanitary flange           | 1-Silicone                  |
|              | 2- Jacket with 1/4" NPT ports-360 deg | 2- 10"         | flange for vent and drain        | 2:3/4" TC sanitary flange            | 2-EPR                       |
|              |                                       | 3- 20"         |                                  | 3: 3/4" butt weld(OD 19.05x 1.65thk) | 3-PTFE encapsulated silicon |
|              |                                       | 4- 30"         | 2-Purge valve for vent and drain | 4: 1" butt weld(OD 25.4x 1.65thk)    |                             |
|              |                                       | 5- 40"         |                                  |                                      |                             |

All dimensions are in mm. unless and otherwise specified.

The information contained in this brochure is for guidance only. We reserve the right to modify any material or feature without notice in advance. For further information, please, consult our application specialist.